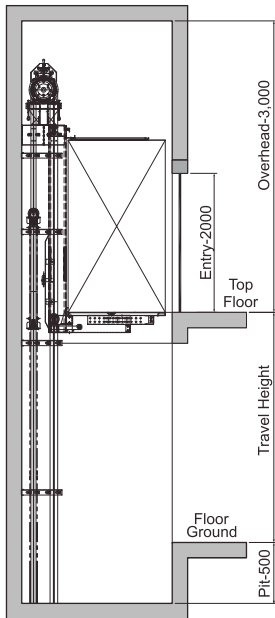
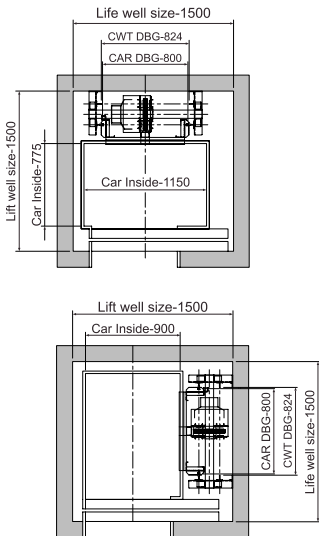


Home Elevator

HOISTWAY ELEVATION DRAWING

HOISTWAY PLAN LAYOUT



SPECIFICATION

RPM	120	Pulley Dia.	100 mm
Frequency	12 Hz.	Rope Dia.	4 mm
Voltage	230 VAC	No. of Ropes	4
kW / Hp	0.75 / 1	Lifting Capacity	300 kg
Weight	70 kg.	Lift Speed	0.32 m/s
Brake	Pick-up : 220 VDC	Max. Travel	15 Mts.
Voltage	Holding : 110 VDC	Starts / Day	100

All Dimension are in mm.

This is General Data, it may be changed without notice.